



To buy

COURT



2 bed apartment to buy in NE67

Dunes Court, Beadnell, Chathill,
Northumberland, NE67 5EE

£289,000

 x2  x1  x1

Tenure

Leasehold

Garage parking

Property features

- ✓ Desirable Coastal Location
- ✓ First Floor Apartment
- ✓ Views to Dunes
- ✓ Garage
- ✓ EPC Rating D

Key Information

- ✓ Council Tax: Band A
- ✓ EPC Rating: D
- ✓ Heating supply: Electric
- ✓ Electric supply: National Grid
- ✓ Water supply: Direct mains water
- ✓ Broadband: ADSL copper wire
- ✓ Mobile signal: Good

Arrange a viewing

Darren Tynan
Branch Manager
Alnwick

01665 639110
alnwick@pattinson.co.uk

- ✓ Flexible viewing slots
- ✓ Accompanied viewings

Description

Desirable Coastal Location | Views From Balcony | First Floor Apartment | Two Bedrooms | Garage | Open Plan Living Area

Pattinson Estate Agents are proud to welcome to the market this splendid two-bedroom apartment nestled in the charming seaside village of Beadnell. Blessed with not only a picturesque location but also a practical interior layout, this property is an ideal blend of comfort and practicality.

Offering an open plan living and kitchen area, with two decent-sized bedrooms and shower room, each room is presented beautifully.

Thoughtfully designed and maintained, this cosy apartment ensures comfortable living while offering a unique lifestyle in the heart of Beadnell. Its location offers access to the beautiful Northumberland coast, a stone's throw from the breathtaking Beadnell Bay. Ideal for those looking for a peaceful living environment without compromising on the amenities of modern-life.

On the doorstep, you will find a welcoming community, local shops, pubs and restaurants as well as outdoor activities such as fishing, sailing and water-skiing, all of which contribute to the charm of coastal living.

Don't miss this perfect opportunity to own an apartment right in the centre of Beadnell, a place that seamlessly blends coastal charm with the conveniences of modern-day living. Contact Pattinson Estate Agents to arrange a viewing today.

To book your viewing please call 01665 639110 or email Alnwick@pattinson.co.uk.

We expect a high level of interest so early viewing is highly recommended.

Council Tax Band: A

Tenure: Leasehold

Length of Lease: 964

Annual Ground Rent Amount: £50.00

Annual Service Charge Amount: £850.00

Price: £289,000

Property Type: Apartment

Parking: Garage, Off Street, On Street, Rear, Private, Residents, Communal

Year built: 1992

Construction materials: Brick and block

Roofing type: Clay tiles

Risk of floods and or erosion: No

Flooded in last 5 years: No

Flood defences: No

Planning permissions or proposals for development: No

Coalfield or mining area: No

Listed property: No

Conservation area: No

Public rights of way: No

Adaptions for accessibility: No

Restrictions: No

Required access: No

Heating: Electric

Electric: National Grid

Water: Direct mains water

Water meter: Yes

Sewerage: Standard UK domestic

Air conditioning: No

Broadband: ADSL copper wire

Mobile signal coverage: Good

Front Elevation

First Floor Flat situated opposite the Dunes. Excellent location for access to the beach.



Entrance / Stairs to First floor

A well-lit staircase area with window to side elevation.



Entrance Hallway

A bright and spacious hallway area with a built in storage cupboard, giving access into open plan lounge, kitchen area and two bedrooms and shower room.



Lounge

A stylish and well-lit open-plan living and kitchen area that seamlessly blends comfort with contemporary design. Large windows that allow in plenty of light with views across to the Dunes. A door giving access onto the balcony at the rear elevation.



Kitchen

A bright, contemporary open-plan kitchen and living space with a clean, minimalist design. The kitchen features sleek white handle-less cabinetry arranged in an L-shape, complemented by a white countertop and an integrated sink situated beneath the window. There is also a built-in oven, and a wall-mounted stainless steel extractor hood, a built in dishwasher and a washing machine is neatly tucked beneath the counter top.



Balcony to rear elevation

A charming balcony space with a view of the dunes and surrounding area. The balcony itself is finished with interlocking wooden deck tiles and is enclosed by dark-painted vertical wooden slats, providing both safety and privacy.



Master Bedroom

Two large windows with views to the front elevation.



Bedroom Two

Window with views to the front elevation. Built in storage cupboard.



Family Shower room

A neatly designed bathroom with a clean and minimal aesthetic. The walk-in shower features a large glass screen and is fitted with a chrome handheld showerhead and wall-mounted wire shelf for toiletries. Adjacent to the shower is a sleek white vanity unit with integrated sink and chrome fixtures. The vanity includes under-sink storage with double cabinet doors alongside the WC.



Rear Elevation

Balcony to first floor providing lovely views of the area.

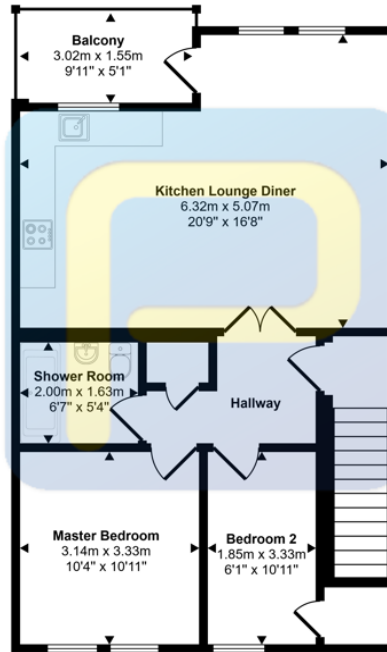


Garage

In nearby block.



Approx Gross Internal Area
63 sq m / 673 sq ft



Floorplan

This floorplan is only for illustrative purposes and is not to scale. Measurements of rooms, doors, windows, and any items are approximate and no responsibility is taken for any error, omission or mis-statement. Icons of items such as bathroom suites are representations only and may not look like the real items. Made with Made Snappy 360.

Energy Efficiency Rating		Current	Potential
<i>Very energy efficient - lower running costs</i>			
(92-100) A			
(81-91) B			
(69-80) C			78
(55-68) D	66		
(39-54) E			
(21-38) F			
(1-20) G			
<i>Not energy efficient - higher running costs</i>			
England, Scotland & Wales		EU Directive 2002/91/EC	

Dunes Court, Beadnell, Chathill, Northumberland, NE67 5EE

Contact your local branch today for more information on this property:

**19 Bondgate Without, Alnwick, Northumberland, NE66 1PY, Tel: 01665 639110,
alnwick@pattinson.co.uk, www.pattinson.co.uk**

These particulars, whilst believed to be accurate are set out as a general outline only for guidance and do not constitute any part of an offer or contract. Intending purchasers should not rely on them as statements of representation of fact, but must satisfy themselves by inspection or otherwise as to their accuracy. No person in this firm's employment has the authority to make or give any representation or warranty in respect of the property.

