



## 2 bed semi-detached house to buy in NE15

Denton Road, Newcastle upon Tyne, Newcastle upon Tyne, Tyne and Wear, NE15 7HD

**£145,000** Offers Over

 x 2  x 1  x 2

Tenure

**Freehold**

Driveway parking

## Property features

- ✓ Semi Detached House
- ✓ Two Bedrooms
- ✓ Mature Gardens
- ✓ Double Length Driveway
- ✓ EPC Rating C

## Key Information

- ✓ Council Tax: Band A
- ✓ EPC Rating: C
- ✓ Heating supply: Gas

## Arrange a viewing

Darren Porter  
Senior Valuer  
West Road

0191 2725880  
west.road@pattinson.co.uk

- ✓ Flexible viewing slots
- ✓ Accompanied viewings

## Description

Two Bedroom Semi-Detached Home – Denton Road, Denton Burn

This attractive 1930s-style two-bedroom semi-detached house on Denton Road in Denton Burn presents an excellent opportunity for families, couples, or first-time buyers. Situated on a generous plot, the property features a double-length driveway and mature front and rear gardens, offering both privacy and space for outdoor enjoyment. The interior begins with a welcoming hallway that leads to two spacious reception rooms, providing flexible living and dining areas. The kitchen is both attractive and functional, with ample worktop space and a pleasant outlook over the rear garden. A staircase leads to the first floor, where you'll find two well-sized double bedrooms, a family bathroom, and a separate WC.

The house retains classic 1930s features, including bay windows that allow natural light to fill the rooms. The larger-than-average plot enhances the potential for outdoor entertaining, gardening, or future development, subject to the necessary approvals. Located in a well-established and convenient area, Denton Burn offers excellent local amenities, schools, and public transport links. With easy access to the A1 and Newcastle city centre, the location is ideal for commuters and growing families alike.

Council Tax Band: A

Tenure: Freehold

Price: Offers Over £145,000

Property Type: Semi-detached house

Parking: Driveway

Heating: Gas

## Entrance Hallway

Stairs to first floor.

---

## Lounge

4.00m x 4.10m (13'1" x 13'5")



## Dining Room

3.70m x 2.90m (12'1" x 9'6")



## Kitchen

3.70m x 2.00m (12'1" x 6'6")



## Stairs to First Floor

---

## Bedroom One

3.70m x 3.30m (12'1" x 10'9")



## Bedroom Two

4.10m x 3.10m (13'5" x 10'2")



## Bathroom

2.20m x 1.70m (7'2" x 5'6")



---

## Separate WC

---

## External Front

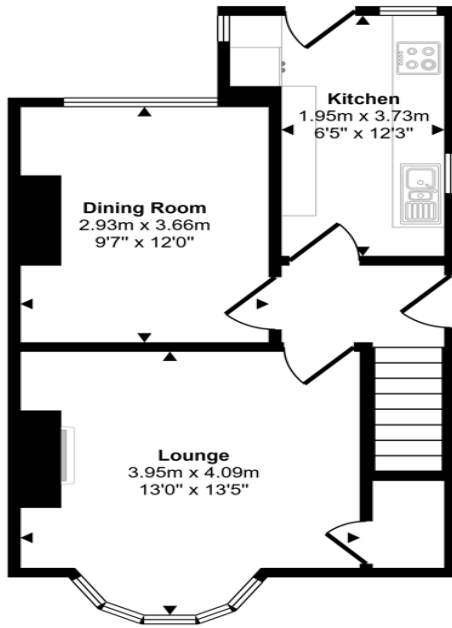


---

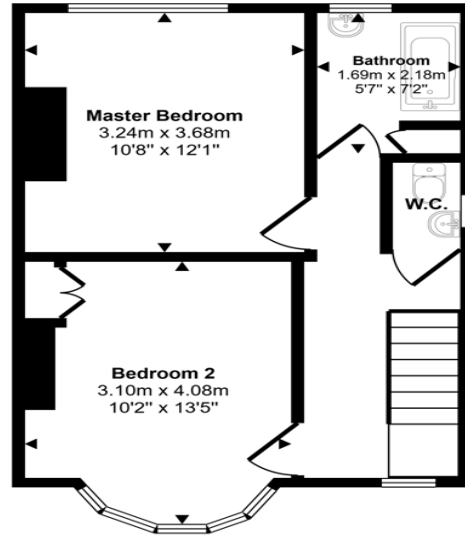
## External Rear



Approx Gross Internal Area  
78 sq m / 842 sq ft



Ground Floor  
Approx 40 sq m / 435 sq ft



First Floor  
Approx 38 sq m / 407 sq ft

This floorplan is only for illustrative purposes and is not to scale. Measurements of rooms, doors, windows, and any items are approximate and no responsibility is taken for any error, omission or mis-statement. Icons of items such as bathroom suites are representations only and may not look like the real items. Made with Made Snappy 360.

Energy Efficiency Rating		
	Current	Potential
<i>Very energy efficient - lower running costs</i>		
(92-100) <b>A</b>		
(81-91) <b>B</b>		
(69-80) <b>C</b>	72	78
(55-68) <b>D</b>		
(39-54) <b>E</b>		
(21-38) <b>F</b>		
(1-20) <b>G</b>		
<i>Not energy efficient - higher running costs</i>		
England, Scotland & Wales		EU Directive 2002/91/EC

Denton Road, Newcastle upon Tyne, Newcastle upon Tyne, Tyne and Wear, NE15  
7HD

Contact your local branch today for more information on this property:  
**158 West Road, Newcastle Upon Tyne, Tyne & Wear, NE4 9QB, Tel: 0191 2725880,**  
**west.road@pattinson.co.uk, www.pattinson.co.uk**

These particulars, whilst believed to be accurate are set out as a general outline only for guidance and do not constitute any part of an offer or contract. Intending purchasers should not rely on them as statements of representation of fact, but must satisfy themselves by inspection or otherwise as to their accuracy. No person in this firms employment has the authority to make or give any representation or warranty in respect of the property.

