



3 bed semi-detached house to buy in NE32

Featherstone Grove, ., Jarrow, Tyne and Wear, NE32 5YG

£210,000

 x3  x1  x2

Tenure

Freehold

Property features

- ✓ DOUBLE FRONTED
- ✓ THREE BEDROOMS
- ✓ SPACIOUS LOUNGE
- ✓ OPEN PLAN KITCHEN / DINING
- ✓ EPC Rating D

Driveway & Garage parking

Key Information

- ✓ Council Tax: Band A
- ✓ EPC Rating: D
- ✓ Heating supply: Gas
- ✓ Electric supply: National Grid
- ✓ Water supply: Direct mains water

Arrange a viewing

Jason Olley
Branch Manager
Jarrow

0191 4897431
jarrow@pattinson.co.uk

- ✓ Flexible viewing slots
- ✓ Accompanied viewings

Description

Pattinson Estate Agents welcome to the market this double fronted Three Bedroom Semi Detached family home located on Featherstone Grove, JARROW.

Offering substantial living space within a picturesque location, this pristinely presented three-bedroom semi-detached house in Jarrow is the ideal property for any growing family or aspiring homeowner. The property is double fronted, promising superb curb appeal and a strong first impression.

With a bounty of natural light pouring in, the heart of the house is the capacious lounge, providing enough space for relaxation and entertainment. The reception room is a cosy yet roomy space, equally suited to family get-togethers or quiet evenings in.

This residential home features three well-proportioned bedrooms, offering adaptable space to perfectly suit your lifestyle. Whether utilised as sleeping quarters, a home office, or a child's room, the possibilities are abundant.

The house includes a modern family bathroom, with ample space to relax and unwind, this bathroom promises functionality without sacrificing style.

Situated in Jarrow, a town cherished for its rich history and sense of community, this property promises not only a beautiful home but a welcoming neighbourhood as well.

This superbly presented, double-fronted, semi-detached property promises both comfort and appeal in a highly desirable location.

Call Pattinson Estate Agents Jarrow to arrange an early viewing: 0191 4897431

Council Tax Band: A

Tenure: Freehold

Price: £210,000

Property Type: Semi-detached house

Parking: Driveway & Garage

Construction materials: Brick and block

Roofing type: Clay tiles

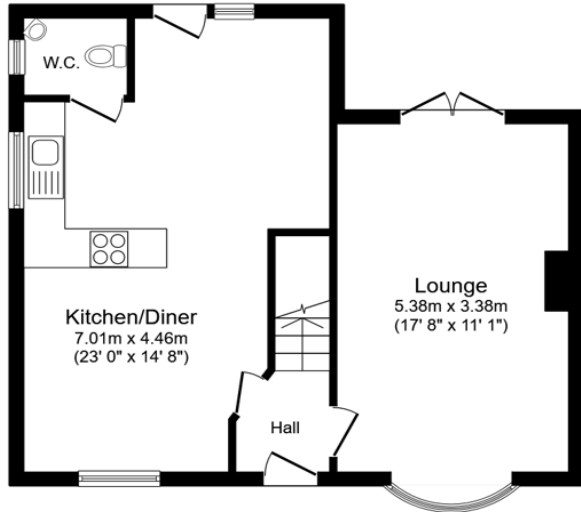
Heating: Gas

Electric: National Grid

Water: Direct mains water

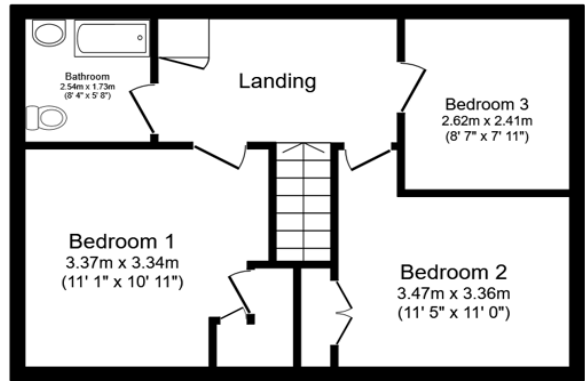
Sewerage: Standard UK domestic

Air conditioning: No



Ground Floor

Floor area 50.7 sq.m. (545 sq.ft.)



First Floor

Floor area 42.7 sq.m. (460 sq.ft.)

Total floor area: 93.4 sq.m. (1,005 sq.ft.)

This floor plan is for illustrative purposes only. It is not drawn to scale. Any measurements, floor areas (including any total floor area), openings and orientations are approximate. No details are guaranteed, they cannot be relied upon for any purpose and do not form any part of any agreement. No liability is taken for any error, omission or misstatement. A party must rely upon its own inspection(s). Powered by www.Propertybox.io

| Energy Efficiency Rating | | |
|----------------------------------------------------|-------------------------|-----------|
| | Current | Potential |
| <i>Very energy efficient - lower running costs</i> | | |
| (92-100) A | | |
| (81-91) B | | |
| (69-80) C | | 78 |
| (55-68) D | 67 | |
| (39-54) E | | |
| (21-38) F | | |
| (1-20) G | | |
| <i>Not energy efficient - higher running costs</i> | | |
| England, Scotland & Wales | EU Directive 2002/91/EC | |

Featherstone Grove, ., Jarrow, Tyne and Wear, NE32 5YG

Contact your local branch today for more information on this property:

67 Ellison Street, Jarrow, South Tyneside, Tyne & Wear, NE32 3JU, Tel: 0191 4897431, jarrow@pattinson.co.uk, www.pattinson.co.uk

These particulars, whilst believed to be accurate are set out as a general outline only for guidance and do not constitute any part of an offer or contract. Intending purchasers should not rely on them as statements of representation of fact, but must satisfy themselves by inspection or otherwise as to their accuracy. No person in this firms employment has the authority to make or give any representation or warranty in respect of the property.

