



2 bed upper flat to buy in SR2

Edward House , Sunderland, Tyne and Wear, SR2 7LQ

£84,950

 x2  x1  x1

Tenure

Leasehold

Allocated parking

Property features

- ✓ First Floor Apartment
- ✓ Ideal First Time Buy Or Investment Opportunity
- ✓ Two Double Bedroom
- ✓ Sought After Complex
- ✓ EPC Rating C

Key Information

- ✓ Council Tax: Band C
- ✓ EPC Rating: C
- ✓ Heating supply: Air Source Heat Pump

Arrange a viewing

Susan Davison
Branch Manager
Houghton

0191 5120933
houghton@pattinson.co.uk

- ✓ Flexible viewing slots
- ✓ Accompanied viewings

Description

****FIRST FLOOR APARTMENT**TWO BEDROOMS**SECURE ENTRY SYSTEM**ALLOCATED PARKING BAY**SOUGHT AFTER COMPLEX**WALKING DISTANCE TO SUNDERLAND CITY CENTRE****

Pattinson Estate agents are excited to welcome to the market this impressive apartment located in the popular location of Edward House, Albert Court, Sunderland, the apartment boasts two bedrooms and is situated on the first floor of this complex. Perfectly positioned within easy access of local shops and other amenities, great public transport and major road links via the A690. Also within walking distance to Mowbray Park, Sunderland University Hospital & City Centre , as well as being a short drive to Roker Beach and Newcastle City Centre.

This well presented apartment offers spacious and stylish accommodation throughout and briefly comprises:- Secure entry system providing access to the building, apartment entrance/hallway, a spacious lounge, fitted kitchen, two double bedrooms and a modern three piece bathroom. Externally, the property benefits from an allocated parking space, in addition to a number of visitor parking bays.

Early viewing is highly recommended to fully appreciate the space, presentation and convenient location this fantastic apartment has to offer. Please contact us to arrange your viewing.

Council Tax Band: C

Tenure: Leasehold

Length of Lease: 99

Annual Service Charge Amount: £1,341.00

Price: £84,950

Property Type: Upper Flat

Parking: Allocated

Heating: Air Source Heat Pump

Building Entrance

The building entrance benefits from a secure entry system and stairs to each floor.



Apartment Entrance

The apartment entrance leading to the hallway, which gives access to each room.

Lounge

4.58m x 3.57m (15'0" x 11'8")

Spacious lounge with laminate flooring, a feature fireplace, a radiator and a double glazed front aspect window.



Kitchen

1.95m x 2.99m (6'4" x 9'9")

Fitted kitchen benefiting from a range of upper and lower units with contrasting worksurfaces, a stainless steel sink unit, plumbing for a washing machine and an integrated oven with a ceramic hob. Laminate flooring, tiled splash back, a radiator and a double glazed window.



Bedroom One

3.36m x 3.14m (11'0" x 10'3")

Double bedroom laminate flooring, a radiator and a Juliet balcony.



Bedroom Two

4.26m x 2.98m (13'11" x 9'9")

Double bedroom laminate flooring, a radiator and a double glazed window.

Bathroom

2.01m x 1.90m (6'7" x 6'2")

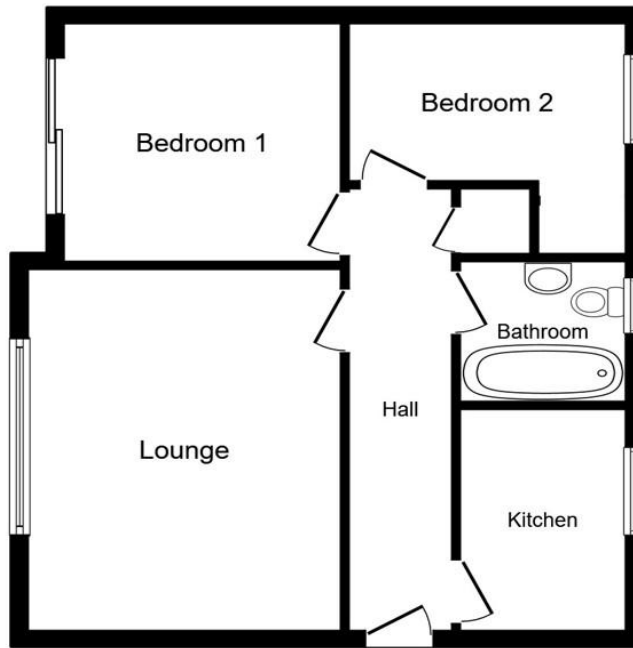
Modern three piece bathroom benefiting from a walk-in shower, hand wash basin and W.C. and tiled flooring, UPVC cladded splash back, a radiator and a double glazed window.



External


Externally, the property benefits from secure gated access leading to the allocated parking bay and the apartment entrance.





Floor Plan

This floor plan is for illustrative purposes only. It is not drawn to scale. Any measurements, floor areas (including any total floor area), openings and orientations are approximate. No details are guaranteed, they cannot be relied upon for any purpose and do not form any part of any agreement. No liability is taken for any error, omission or misstatement. A party must rely upon its own inspection(s). Powered by www.Propertybox.io

Energy Efficiency Rating		Current	Potential
<i>Very energy efficient - lower running costs</i>			
(92-100) A			
(81-91) B			
(69-80) C		80	80
(55-68) D			
(39-54) E			
(21-38) F			
(1-20) G			
<i>Not energy efficient - higher running costs</i>			
England, Scotland & Wales		EU Directive 2002/91/EC 	

Edward House , Sunderland, Tyne and Wear, SR2 7LQ

Contact your local branch today for more information on this property:

14a Newbottle Street, Houghton Le Spring, Tyne and Wear, Tyne & Wear, DH4 4AB, Tel: 0191 5120933, houghton@pattinson.co.uk, www.pattinson.co.uk

These particulars, whilst believed to be accurate are set out as a general outline only for guidance and do not constitute any part of an offer or contract. Intending purchasers should not rely on them as statements of representation of fact, but must satisfy themselves by inspection or otherwise as to their accuracy. No person in this firm's employment has the authority to make or give any representation or warranty in respect of the property.

