



2 bed lodge to buy in NE65

16 Percy Drive, Percy Wood Holiday Park,
Swarland, Northumberland, NE65 9JW






£125,000

 x 2  x 2  x 1

Tenure

Leasehold

Property features

-  Desirable Location
-  40' x 20' Lodge
-  Two Bedrooms
-  Decking
-  Allocated Parking Space

Allocated parking

Key Information

✓ Heating supply: Liquefied petroleum gas

Arrange a viewing

Darren Tynan
Branch Manager
Alnwick

01665 639110
alnwick@pattinson.co.uk

- ✓ Flexible viewing slots
- ✓ Accompanied viewings

Description

Two bedroom 40' x 20' Lodge | En suite to Master Bedroom | Desirable location | Wrap Round Decking

Pattinson Estate Agents are delighted to welcome to the market this beautifully presented Sunseeker Sensation Lodge.

This Lodge offers contemporary and spacious accommodation, designed with comfort and quality in mind. Located on a prime pitch within the desirable Percy Wood Holiday Park, this lodge provides a tranquil escape and excellent holiday base.

Set in the heart of rural Northumberland, Percy Wood offers the perfect blend of peaceful woodland setting and easy access to local attractions such as Alnwick Castle, Bamburgh, and Northumberland's spectacular coastlines.

The park is well-maintained with excellent facilities: 18-hole golf course, Children's play area, Woodland walks, cycle routes, On-site café and shop and is a Pet-friendly environment.

Early viewing is recommended as we anticipate a high level of interest.

Please contact the Alnwick office to arrange viewings.

Please note: The Vendors have informed us that this cannot be used as a holiday let

Tenure: Leasehold

Price: £125,000

Property Type: Lodge

Parking: Allocated

Heating: Liquefied petroleum gas

Front Elevation

The lodge features a contemporary timber-effect exterior in a rich natural wood tone, complemented by contrasting dark fascia and roofline, blending seamlessly into the woodland surroundings.

Full-Height Glazed Doors: Twin French patio doors open out from the living area onto the expansive wraparound decking, creating a seamless indoor-outdoor lifestyle ideal for relaxing or entertaining.

Spacious Composite Decking: The grey composite decking is both stylish and durable, offering ample space for outdoor dining, sun lounging, or simply enjoying the tranquil setting. A woven rattan table with a glass top adds a touch of elegance and functionality to the space.

Private & Peaceful Position: Surrounded by mature trees and other well-kept lodges within the park, the lodge enjoys a peaceful and well-positioned plot with woodland views.

Feature Lighting: Integrated spotlights in the decking overhang allow for ambient evening use, enhancing the property's appeal during



Lounge

3.61m x 5.90m (11'10" x 19'4")

A bright, open-plan space with full-length windows and sliding patio doors leading out to the wraparound decking. Features include a modern electric fire, stylish furnishings



Dining Area

This modern dining area features a rectangular wooden table with a neutral-colored runner, surrounded by six grey upholstered chairs that provide both comfort and style. The room is bright and welcoming, thanks to large windows on two sides that let in plenty of natural light, each dressed with grey geometric-patterned Roman blinds. The color palette is composed of soft greys and neutrals, giving the space a calm and contemporary aesthetic. A tall, vertical column-style radiator in matte dark grey adds a modern design element, while a black pendant lamp above the table provides ambient lighting. The herringbone-patterned wooden flooring adds warmth and texture.



Kitchen

2.33m x 7.34m (7'7" x 24'0")

A stunning high-gloss kitchen with integrated appliances including a fridge-freezer, oven, hob, microwave, and dishwasher. The dining space accommodates 4-6 guests and is perfect for entertaining.



Master Bedroom

2.33m x 4.81m (7'7" x 15'9")

This stylish bedroom offers a beautifully appointed space ideal for guests or family, with a layout and finish that rivals the master suite:

Double Bed with Feature Headboard: A generously sized bed is framed by a striking black padded headboard and wooden overhang with integrated lighting, creating a cozy and refined focal point.

Dual Aspect Windows: Two large double-glazed windows flood the room with natural light from both sides, enhancing the sense of space and connection to the surrounding holiday park and woodlands.

Neutral Colour Scheme: Soft greys and natural wood tones are paired with white walls and plush carpet flooring, giving the room a tranquil, modern feel.

Matching Furnishings: Bedside tables and a built-in drawer unit offer both surface and storage space. A cushioned bench under the window provides additional seating or storage flexibility.



Master Bedroom En Suite

2.10m x 1.69m (6'10" x 5'6")

This beautifully appointed contemporary bathroom is both stylish and functional, reflecting the high-end finish throughout the Sunseeker Sensation.

Modern Walk-in Shower: Featuring a large, glass-fronted enclosure with chrome fittings and full-height shower panels for a clean, seamless look.

Contemporary Vanity Unit: White gloss basin unit with ample surface space and under-sink storage, paired with a sleek chrome mixer tap.

Low-Level WC: Crisp white toilet with dual flush function positioned beside a frosted privacy window.

Fitted Shelving Unit: Built-in open shelving provides convenient storage for towels, toiletries, and decorative accents.

Designer Flooring: Warm-toned herringbone effect vinyl flooring, offering durability with a premium aesthetic.

Heated Towel Rail: Black ladder-style towel radiator—both practical and stylish.



Bedroom Two

3.04m x 2.59m (9'11" x 8'5")

This inviting master bedroom offers a luxurious retreat, combining comfort with modern design in a soft, neutral palette:

King-Sized Bed: Elegantly dressed with plush white linens, tactile throws, and coordinating accent cushions in shades of teal and grey, providing both comfort and sophistication.

Feature Headboard & Lighting: A stylish black headboard runs the width of the room, complemented by a natural timber overhang with built-in downlights—adding a warm, ambient glow ideal for winding down in the evening.

Large Window: The generously sized double-glazed window allows for plenty of natural light, enhanced by contemporary grey curtains on a chrome pole. Views extend to mature trees and greenery, enhancing the lodge's tranquil woodland setting.

Built-In Furniture: Matching bedside cabinets and a full wall-mounted unit under the window offer practical storage and surface space. A radiator beneath adds year-round comfort.

Wall-Mounted Flat Screen TV: Perfectly positioned for vi



Shower Room

2.71m x 1.32m (8'10" x 4'3")

This private en-suite shower room offers a modern, hotel-quality finish with a practical layout and calming design:

Full-Sized Shower Enclosure: Large glazed sliding doors open into a spacious shower cubicle, featuring integrated shelving for toiletries and a clean, tiled-look surround.

Vanity Unit & Sink: A stylish built-in sink sits within a sleek, dark countertop, offering ample surface area for daily essentials. The under-sink unit features shelving and closed cabinetry, providing a combination of display and concealed storage.

Large Mirror & Lighting: A wide wall mirror above the basin enhances the sense of space and brightness in the room.

WC & Privacy Window: The low-level toilet is positioned conveniently next to the large frosted window, which allows for excellent natural light while maintaining privacy. Black venetian blinds add a bold contrast and modern edge.

Contemporary Flooring: Consistent with the main bathroom, the room features h

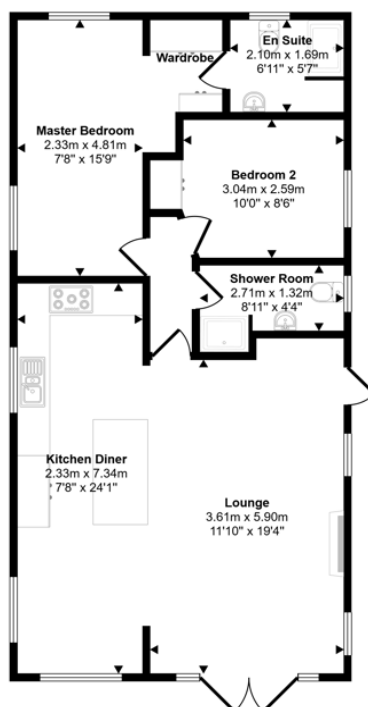


Side elevation

Decking wrapping round Lodge | Allocated parking space



Approx Gross Internal Area
75 sq m / 806 sq ft



This floorplan is only for illustrative purposes and is not to scale. Measurements of rooms, doors, windows, and any items are approximate and no responsibility is taken for any error, omission or mis-statement. Icons of items such as bathroom suites are representations only and may not look like the real items. Made with Made Snappy 360.

16 Percy Drive, Percy Wood Holiday Park, Swarland, Northumberland, NE65 9JW

Contact your local branch today for more information on this property:

**19 Bondgate Without, Alnwick, Northumberland, NE66 1PY, Tel: 01665 639110,
alnwick@pattinson.co.uk, www.pattinson.co.uk**

These particulars, whilst believed to be accurate are set out as a general outline only for guidance and do not constitute any part of an offer or contract. Intending purchasers should not rely on them as statements of representation of fact, but must satisfy themselves by inspection or otherwise as to their accuracy. No person in this firm's employment has the authority to make or give any representation or warranty in respect of the property.

