



3 bed end of terrace house to buy in NE66

Bridge Street, Alwick, Northumberland,
NE66 1QY

£260,000

 x3  x2  x1

Tenure

Freehold

On Street parking

Property features

- ✓ Desirable Town Location
- ✓ Recently Renovated
- ✓ End Terrace
- ✓ Three Bedrooms
- ✓ EPC Rating D

Key Information

- ✓ Council Tax: Band B
- ✓ EPC Rating: D
- ✓ Heating supply: Gas
- ✓ Electric supply: National Grid
- ✓ Water supply: Direct mains water
- ✓ Broadband: FTTP (fibre to the premises)
- ✓ Mobile signal: Good

Arrange a viewing

Darren Tynan
Branch Manager
Alnwick

01665 639110
alnwick@pattinson.co.uk

- ✓ Flexible viewing slots
- ✓ Accompanied viewings

Description

Three Bedrooms | End Terrace | Recently Renovated | Rear Courtyard | Front Garden | Log Burner

Pattinson Estate Agents are delighted to present this absolutely stunning, three bedroom, end of terrace house in the highly sought-after location of Alnwick. This unique residential property for sale encapsulates comfortable living with convenience, poised to capture the perfect balance of high-quality family accommodation and opulent lifestyle living.

This beautiful, newly renovated home comprises of three generously sized bedrooms, each designed to maximise space and create an atmosphere of relaxed comfort. The bedrooms are served by a well-appointed, modern bathroom, finished to a high standard, which provides practical luxury.

The heart of the space is the inviting reception room, providing a wonderful area for entertaining or unwinding alike. Flooded with natural light, this room offers plentiful space to configure your living arrangements just as you like.

The property's location in Alnwick, places it within easy reach of local amenities, restaurants, boutiques, and the best of the Northumberland countryside – a diversity of attractions right at your doorstep!

A fantastic opportunity for first-time buyers or families looking to settle down in a new home that's finished to a high standard.

Contact Pattinson Estate Agents Alnwick to arrange a viewing and experience first-hand the charm of this delightful end of terrace house. Your dream home in Alnwick awaits!

We expect a high level of interest so early viewing is highly recommended!

Please email Alnwick@pattinson.co.uk or call 01665 639110

Council Tax Band: B

Tenure: Freehold

Price: £260,000

Property Type: End of terrace house

Parking: On Street

Year built: 1900

Construction materials: Stone built

Roofing type: Slate tiles

Risk of floods and or erosion: No

Flooded in last 5 years: No

Flood defences: No

Planning permissions or proposals for development: No

Coalfield or mining area: No

Listed property: No

Conservation area: No

Public rights of way: No

Adaptions for accessibility: No

Restrictions: No

Required access: No

Heating: Gas, Wood Burner

Electric: National Grid

Water: Direct mains water

Water meter: No

Sewerage: Standard UK domestic

Air conditioning: No

Broadband: FTTP (fibre to the premises)

Mobile signal coverage: Good

Front Elevation

A charming end-terrace stone house with a traditional design, featuring a sturdy sandstone façade and a blue modern front door with glass panels. The property has two floors, with sash-style windows on both levels that add to its classic character. A small front garden, enclosed by a black wrought-iron fence, is neatly landscaped with young shrubs and gravel.



Entrance Porch

A small, bright Porch way.

Entrance Hallway

The space features light wooden flooring. At the end of the hallway is a white door with glass panels, allowing natural light to flow through from the entrance area. On the left, an open doorway leads into a spacious, carpeted room with a large sash-style window, creating a warm and inviting living space. The overall look is clean, fresh, and minimal, with a blend of wood and neutral tones that give the interior a contemporary yet homely feel.

Lounge

4.00m x 3.70m (13'1" x 12'1")

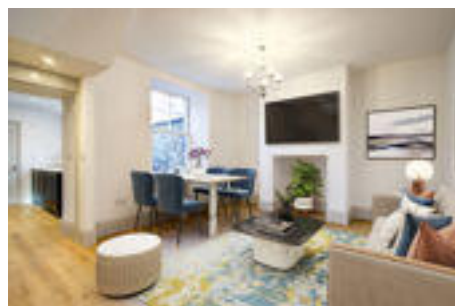
A bright, spacious living room with a clean and neutral décor, complemented by light beige carpet flooring that creates a warm and inviting atmosphere. A large sash-style window allows natural light to flood the space. On one wall, there is a feature fireplace with exposed stonework framing a wood-burning stove, adding a rustic yet stylish focal point to the room. Above, a modern chandelier light fixture hangs from the ceiling, enhancing the contemporary touch within the traditional setting. The overall look is simple, fresh, and ready for personalisation.



Dining Room

5.16m x 3.85m (16'11" x 12'7")

Another bright and airy interior room with a modern yet homely design. The space features light wood flooring that adds warmth and contrast to the walls and ceilings. A large sash-style window allows plenty of natural light to fill the room. To the left, a staircase with white spindles and a wooden handrail leads upstairs, the steps carpeted for comfort. The room is open and versatile, with a storage cupboard and a cupboard under the stairs. Overall, the room feels spacious, fresh, and ideal for use as a living and dining area.



Kitchen

2.35m x 3.41m (7'8" x 11'2")

A sleek and modern kitchen with a stylish design. The space features deep navy-blue cabinetry with silver handles, paired with contemporary countertops for a clean and contemporary contrast. On the left-hand side, there is an integrated induction hob, fridge freezer and oven, with ample cupboard and drawer storage above and below. On the right, a long countertop houses a white inset sink with a chrome mixer tap and a dishwasher, positioned beneath a large window that lets in plenty of natural light. All Kitchen appliances are AEG. The floor is finished in light wood, adding warmth to the overall modern aesthetic. The kitchen feels bright, well-organised, and practical, with a balance of elegance and functionality.



Downstairs WC

A compact and modern WC/ cloakroom with a minimalist design. On the left, there is a small rectangular sink with a sleek chrome mixer tap set into a dark vanity unit. To the right, a concealed cistern toilet is fitted beneath a tiled section, featuring white rectangular subway tiles with dark grout for a stylish contrast. A flush plate is mounted neatly above the toilet, and a window allows natural light to brighten the space. The overall look is clean, contemporary, and efficient, making excellent use of a small area which also benefits from a built in storage cupboard.



First Floor Hallway

The space is carpeted in a neutral beige tone, creating a warm and cosy feel. This first floor landing benefits from a large storage cupboard, which is plumbed ready for washing machines.



Master Bedroom

3.29m x 3.87m (10'9" x 12'8")

A spacious bedroom with a clean, modern design. A large sash-style window lets in plenty of natural light. In one corner, there is a small built-in cupboard providing practical storage.



Family Bathroom

2.01m x 2.76m (6'7" x 9'0")

A modern bathroom designed with both functionality and style in mind. The room features a white bathtub with chrome fittings positioned beneath a window with venetian blinds, allowing natural light to filter through. To the left, there is a glass-enclosed corner shower with a chrome showerhead set against a textured wall panel. A sleek white sink with chrome taps sits on a vanity unit, while to the right, a contemporary toilet with a concealed cistern is built into a grey unit for a neat finish. The flooring is a warm wood-effect style, adding contrast and warmth to the predominantly white décor.



Bedroom Two

3.12m x 3.87m (10'2" x 12'8")

The room features beige carpet flooring, and a large sash-style window that lets in plenty of natural light, creating a warm and airy feel. On the left-hand side, built-in wardrobes with louvred doors provide practical storage while blending seamlessly into the neutral décor.



Second Floor Landing

A small landing area at the top of a staircase, designed in a bright and simple style. The stairs are carpeted in a neutral beige tone and lead downwards, with a balustrade and a wooden handrail adding character. A small window lets in natural light, providing a view of the neighbouring stone houses outside. To the left, there is a wooden door painted in a muted beige-grey colour with a latch lock and knob handle, providing access to a storage cupboard / loft space.

Bedroom Three / Games Room / Study

5.19m x 5.46m (17'0" x 17'10")

A loft space with a bright and open layout. The room features sloped ceilings with visible support beams, adding character to the space. A skylight window allows natural light to flood in, complemented by a standard radiator along one wall for heating. The floor is carpeted in a soft beige tone, giving the room a cosy and comfortable feel. A versatile area that could be used as an extra bedroom, office, or hobby room.

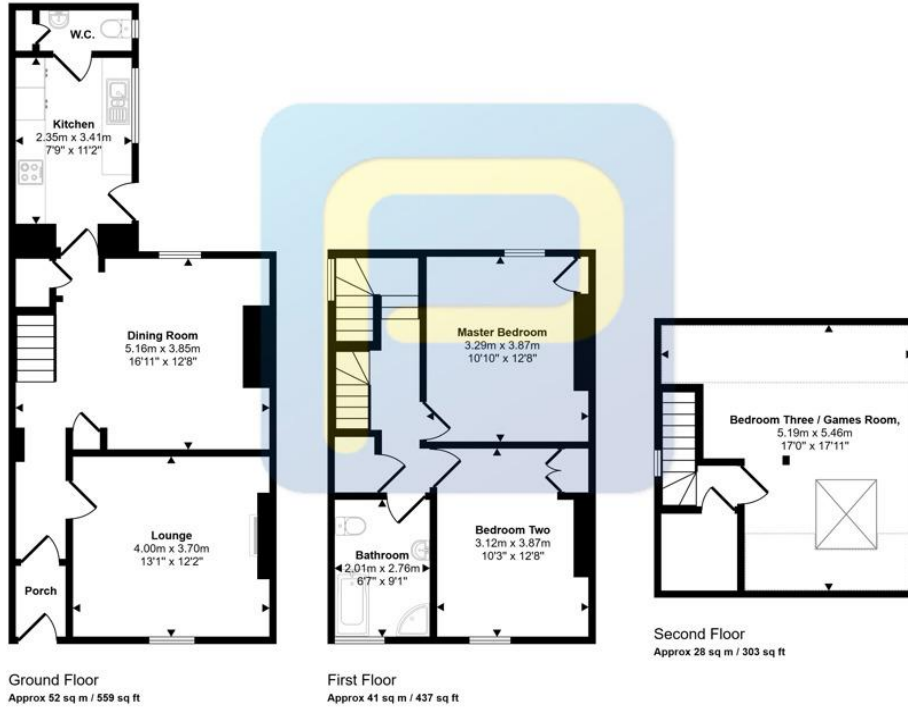


Rear Courtyard

A private, enclosed outdoor courtyard area with a cosy and low-maintenance design. The ground is covered in artificial green turf, giving the space a neat, garden-like appearance. A black wooden gate at the far end provides access through a stone boundary wall into the back lane.



Approx Gross Internal Area
121 sq m / 1299 sq ft



This floorplan is only for illustrative purposes and is not to scale. Measurements of rooms, doors, windows, and any items are approximate and no responsibility is taken for any error, omission or mis-statement. Icons of items such as bathroom suites are representations only and may not look like the real items. Made with Made Snappy 360.

Energy Efficiency Rating		Current	Potential
Very energy efficient - lower running costs			
(92-100) A			
(81-91) B			
(69-80) C			74
(55-68) D	59		
(39-54) E			
(21-38) F			
(1-20) G			
Not energy efficient - higher running costs			
England, Scotland & Wales		EU Directive 2002/91/EC	

Bridge Street, Alnwick, Northumberland, NE66 1QY

Contact your local branch today for more information on this property:

**19 Bondgate Without, Alnwick, Northumberland, NE66 1PY, Tel: 01665 639110,
alnwick@pattinson.co.uk, www.pattinson.co.uk**

These particulars, whilst believed to be accurate are set out as a general outline only for guidance and do not constitute any part of an offer or contract. Intending purchasers should not rely on them as statements of representation of fact, but must satisfy themselves by inspection or otherwise as to their accuracy. No person in this firm's employment has the authority to make or give any representation or warranty in respect of the property.

