



4 bed terraced house to buy in

Hunter Terrace, Grangetown, Sunderland,
Tyne and Wear, SR2 8SD





£190,000 Offers Over

 x4  x1  x2

Tenure

Freehold

Property features

-  Four Bedrooms
-  Traditional Features
-  Turn Key Ready
-  EPC Rating D

On Street parking

Key Information

- ✓ Council Tax: Band B
- ✓ EPC Rating: D
- ✓ Heating supply: Gas

Arrange a viewing

Beth Curtis
Sales Negotiator
Sunderland

0191 5143929
sunderland@pattinson.co.uk

- ✓ Flexible viewing slots
- ✓ Accompanied viewings

Description

Introducing Hunter Terrace, an impressive four-bedroom terraced property located in the desirable Grangetown area of Sunderland. This spacious home beautifully combines classic charm with modern conveniences, making it perfect for families or anyone looking to enjoy generous living space.

As you step inside, you'll be captivated by the original features that define this property, including stunning floors and exquisite stained glass windows that add character and elegance. The ground floor boasts a delightful lounge and second reception room both highlighted by feature windows that fill the spaces with natural light.

With high ceilings throughout, this home exudes an air of spaciousness. The large kitchen diner is a standout, offering ample room for family meals and entertaining, while the distinctive back door adds a touch of charm. For added practicality, a utility room provides extra storage and functionality.

Step outside to discover a quaint courtyard at the rear, providing a private outdoor space perfect for relaxation or gatherings. Overall, Hunter Terrace is a beautiful blend of period features and modern living.

Council Tax Band: B

Tenure: Freehold

Price: Offers Over £190,000

Property Type: Terraced House

Parking: On Street

Heating: Gas

Front Exterior



Entrance Hall

Living Room

4.40m x 4.00m (14'5" x 13'1")



Dining Room/ Reception Room

4.00m x 3.10m (13'1" x 10'2")



Kitchen

6.00m x 3.10m (19'8" x 10'2")



Bedroom 1

5.00m x 3.90m (16'4" x 12'9")



Bedroom 2

4.20m x 3.50m (13'9" x 11'5")



Bedroom 3

1.80m x 1.80m (5'10" x 5'10")



Bedroom 4

3.10m x 1.80m (10'2" x 5'10")

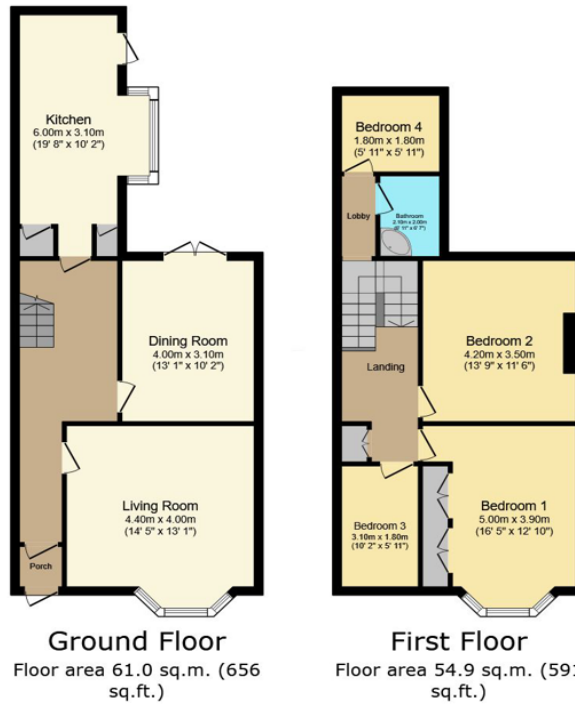


Family Bathroom



Rear Exterior





Total floor area: 115.8 sq.m. (1,247 sq.ft.)

This floor plan is for illustrative purposes only. It is not drawn to scale. Any measurements, floor areas (including any total floor area), openings and orientations are approximate. No details are guaranteed, they cannot be relied upon for any purpose and do not form any part of any agreement. No liability is taken for any error, omission or misstatement. A party must rely upon its own inspection(s). Powered by www.Propertybox.io

Energy Efficiency Rating		
	Current	Potential
<i>Very energy efficient - lower running costs</i>		
(92-100) A		
(81-91) B		
(69-80) C		
(55-68) D	66	72
(39-54) E		
(21-38) F		
(1-20) G		
<i>Not energy efficient - higher running costs</i>		
England, Scotland & Wales	EU Directive 2002/91/EC	

Hunter Terrace, Grangetown, Sunderland, Tyne and Wear, SR2 8SD

Contact your local branch today for more information on this property:

51 Fawcett Street, Sunderland, South Tyneside, Tyne & Wear, SR1 1RS, Tel: 0191 5143929, sunderland@pattinson.co.uk, www.pattinson.co.uk

These particulars, whilst believed to be accurate are set out as a general outline only for guidance and do not constitute any part of an offer or contract. Intending purchasers should not rely on them as statements of representation of fact, but must satisfy themselves by inspection or otherwise as to their accuracy. No person in this firm's employment has the authority to make or give any representation or warranty in respect of the property.

