



3 bed semi-detached house to buy in NE31

Lindisfarne Road, Hebburn, Tyne and Wear, NE31 2HU

£169,950

 x3  x1  x2

Tenure

Freehold

Driveway parking

Property features

- ✓ EXTENDED SEMI DETACHED
- ✓ THREE DOUBLE BEDROOMS
- ✓ SPACIOUS LARGE LOUNGE / DINING ROOM
- ✓ MODERN KITCHEN/DINER
- ✓ EPC Rating D

Key Information

- ✓ Council Tax: Band A
- ✓ EPC Rating: D
- ✓ Heating supply: Gas
- ✓ Electric supply: National Grid
- ✓ Water supply: Direct mains water

Arrange a viewing

Jason Olley
Branch Manager
Jarrow

0191 4897431
jarrow@pattinson.co.uk

- ✓ Flexible viewing slots
- ✓ Accompanied viewings

Description

Pattinson Estate Agents welcome to the market this Three Bedroom Semi-Detached located on the popular Lindisfarne Road, Hebburn.

Perfect for growing families, the property has space in abundance and benefits from a double Driveway, a large Lounge & Dining Room plus a dual aspect Kitchen/Diner with Breakfast Bar. In addition there are Three Double Bedrooms and externally a large low maintenance rear garden.

Situated within a quiet cul-de-sac, the property is ideally located for local amenities and public transport to Newcastle City Centre, South Shields, Hebburn & Jarrow Town Centre with excellent local road links making travel easy via the A1, A19 and Tyne Tunnel.

Briefly comprising of; Porch, Entrance/Hallway, Lounge, Dining Room, Kitchen/Diner. To the first floor lies Three Double Bedrooms and the Family Bathroom. Externally to the front is a block paved double driveway leading to the entrance and to the rear a low maintenance enclosed garden with patio areas and decorative borders.

Call Pattinson Jarrow on 0191 4897431 or email jarrow@pattinson.co.uk

Council Tax Band: A

Tenure: Freehold

Price: £169,950

Property Type: Semi-detached house

Parking: Driveway

Construction materials: Brick and block

Roofing type: Clay tiles

Heating: Gas

Electric: National Grid

Water: Direct mains water

Water meter: No

Sewerage: Standard UK domestic

Air conditioning: No

External Front

Private enclosed walled low maintenance garden, block paved double driveway, gated access to rear aspect, wrought iron fencing;

Porch

2.00m x 0.94m (6'6" x 3'1")

UPVC part glazed door leading to entrance, double glazed window to front aspect, laminate flooring;



Entrance/Hallway

1.86m x 0.94m (6'1" x 3'1")

UPVC part glazed door leading to Hallway, stairs to first floor, double glazed window to Porch;



Lounge

6.54m x 3.41m (21'5" x 11'2")

Double glazed bay window to front aspect, gas fire with marble surround, gas central heating radiator, opening through to Dining Room;



Lounge (Additional)



Lounge (Additional)



Dining Room

2.75m x 3.18m (9'0" x 10'5")

French doors leading to Garden, gas central heating radiator, laminate flooring;



Kitchen/Diner

6.67m x 2.95m (21'10" x 9'8")

A range of wall, base & display units with contrasting work surfaces, breakfast bar, integrated electric oven, gas hob with extractor over, stainless steel sink with mixer tap over, tiled splashbacks, recess lighting, space for fridge freezer, built in storage, gas central heating radiator, plumbing for washing machine, double glazed windows to front and rear aspect, UPVC part glazed door to Garden;



Kitchen/Diner (Additional)



First Floor Landing

3.96m x 1.02m (12'11" x 3'4")

Built in storage, loft access, doors to;

Bedroom One

3.79m x 3.98m (12'5" x 13'0")

Double glazed window to front aspect, gas central heating radiator, built in sliding wardrobes, recess lighting, laminate flooring;



Bedroom Two

3.23m x 3.42m (10'7" x 11'2")

Double glazed window to rear aspect, gas central heating radiator, built in sliding wardrobe, built in storage with combi boiler, recess lighting;



Bedroom Three

3.79m x 1.99m (12'5" x 6'6")

Double glazed window to front aspect, gas central heating radiator, built in storage, laminate flooring, recess lighting;



Family Bathroom

2.29m x 1.69m (7'6" x 5'6")

A suite comprising of bath with mains handheld shower over, pedestal wash hand basin, W/C, tiled flooring, gas central heating radiator, double glazed window to rear aspect;



External Rear

Private enclosed low maintenance garden, Yorkstone paved patio, decorative circular patio with decorative stone borders, gated access to front aspect, external water source, external lighting, external storage, external power;

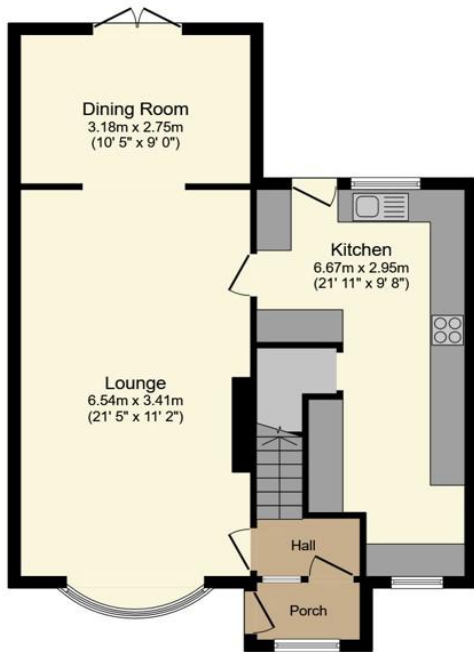


External Rear (Additional)

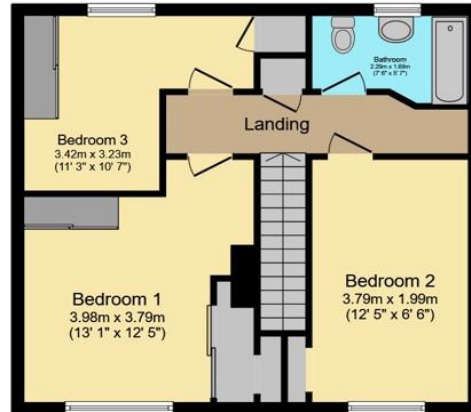


External Front (Additional)





Ground Floor
Floor area 69.6 sq.m. (749 sq.ft.)



First Floor
Floor area 54.9 sq.m. (591 sq.ft.)

TOTAL: 124.5 sq.m. (1,340 sq.ft.)

This floor plan is for illustrative purposes only. It is not drawn to scale. Any measurements, floor areas (including any total floor area), openings and orientations are approximate. No details are guaranteed, they cannot be relied upon for any purpose and do not form any part of any agreement. No liability is taken for any error, omission or misstatement. A party must rely upon its own inspection(s). Powered by www.Propertybox.io

Energy Efficiency Rating		
	Current	Potential
<i>Very energy efficient - lower running costs</i>		
(92-100) A		
(81-91) B		
(69-80) C		74
(55-68) D	67	
(39-54) E		
(21-38) F		
(1-20) G		
<i>Not energy efficient - higher running costs</i>		
England, Scotland & Wales	EU Directive 2002/91/EC	

Lindisfarne Road, Hebburn, Tyne and Wear, NE31 2HU

Contact your local branch today for more information on this property:

**67 Ellison Street, Jarrow, South Tyneside, Tyne & Wear, NE32 3JU, Tel: 0191 4897431,
jarrow@pattinson.co.uk, www.pattinson.co.uk**

These particulars, whilst believed to be accurate are set out as a general outline only for guidance and do not constitute any part of an offer or contract. Intending purchasers should not rely on them as statements of representation of fact, but must satisfy themselves by inspection or otherwise as to their accuracy. No person in this firm's employment has the authority to make or give any representation or warranty in respect of the property.

